



## PORT OF TANJUNG PELEPAS

Celebrating the  
achievement of Malaysia's  
Best Port award

[www.ptp.com.my](http://www.ptp.com.my)

Leveraging the latest innovative IT systems across all areas of its operations, PTP has clinched the award for Malaysia's port of choice, driven by its mission to provide world-class port services

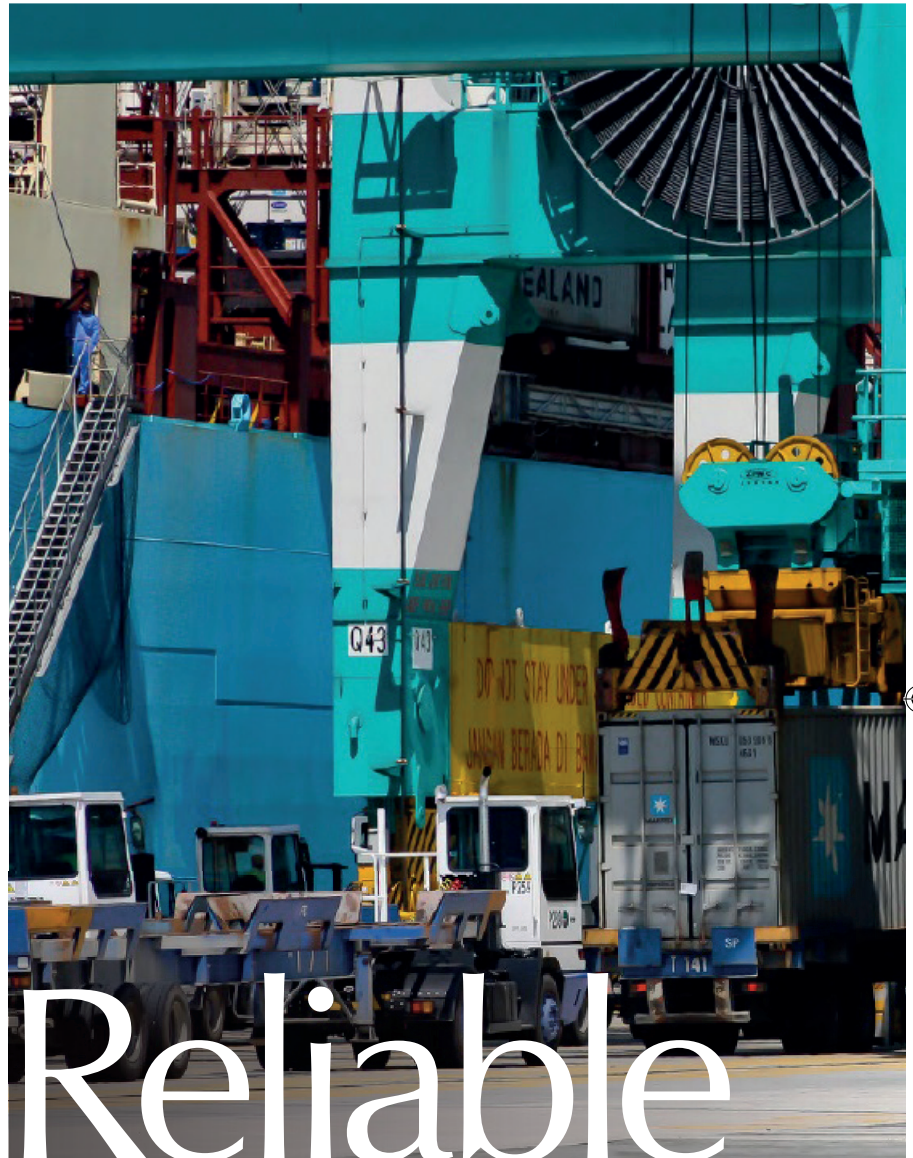
Writer: Emily Jarvis

Project Manager: Ben Weaver

With a vision to be the preferred port of choice in Southeast Asia, the Port of Tanjung Pelepas (PTP) strives to provide unrivalled port services to the global market.

Just 45 minutes from the confluence of the world's busiest shipping lanes, PTP's strategic location makes it easily accessible from the Straits of Malacca. Situated at the confluence of the main east-west shipping lanes on the eastern side of the mouth of the Pulai River in Southwest Johor, PTP is a naturally sheltered deep water port near the Malaysia-Singapore Second Crossing with 14 linear berths totalling 5.04 kilometres and 57 Super Post Panamax cranes to enhance productivity. The Port's berth productivity currently averages at more than 100 moves an hour.

Accorded with Free Zone status in 1997 and Free Zone Authority management in 1998, PTP is governed by the Free Zone Act of 1990 which is enforced by Malaysia's Ministry of Finance. This status promulgates the local container trade volumes of the port and forms part of the hinterland cargo catchment area.



# Reliable EFFICIENT Advanced





PTP has experienced steady growth since the port opened 15 years ago – moving 400,000 TEU in 2000 – to become known today as Malaysia’s most advanced container terminal; leveraging state-of-the-art IT systems that synergise all of the port’s operations and communication centres, resulting in the highest productivity levels possible.

#### Free Zone advantages

Advantageously, PTP sits within Malaysia’s Free Zone. The direct connection to the port terminal therefore provides efficient and cost-effective container movement between the Free Zone and the Port, creating convenience for the container trade.

Moreover, companies are exempt from customs, sales and service taxes; all customs formalities regarding import

## PTP’S ADVANCED SYSTEMS

### SmartRail System

Rubber-tired gantry yard cranes are retrofitted with SmartRail (advanced satellite-guided automatic steering and position determination system), virtually eliminating human error by using the Differential Global Positioning System (DGPS) for pinpoint positioning accuracy to avoid misplaced containers and reduce waiting time for loading discharge

### Container management system

Express and Sparcs from Navis, the core system in PTP is utilised for yard and vessel planning and for facilitating precise container movement

### Gate Control and Monitoring System (GCAMS)

PTP’s GCAMS ensures smooth flow for all gate transactions and integrates Customs Gate Control Systems with PTP’s Container Management Systems to maximise efficiency

### Port radar systems

Port radar systems ensure safe and efficient management of all vessel traffic movement at PTP while enhancing effectiveness during emergency situations

### Vessel Clearance Systems (VCS)

The VCS allows paperless declarations to various governmental agencies and online approval processes

### Safety and security systems

PTP’s Vessel Tracking System provides vital information such as the status of every container in the port at any given time to the marine department for smooth traffic flow and added safety

PTP holds various international security and safety standards including; ISPS compliance, US customs service container security initiative (CSI) and C-TPAT compliance, customers scanning machine, restricted and controlled access to terminals, 24-hour in-house security and emergency response teams among other protocols.

and export declarations are carried out using internal Free Zone Information Processing Systems (FZIPS).

PTP's operations are as environmentally friendly as possible, providing good connectivity by sea, road, air and rail to the rest of the world via an integrated logistics hub within the Iskandar Economic Zone. The Company's international standard of security compliance ensures a safe and secure business environment with an abundant supply of water and electricity.

The Port's Free Zone land comprises five phases with a total area spanning 640 hectares. Phase One and Phase Two account for approximately 256 hectares and are developed with basic infrastructure requirements such

as electricity supply, water supply, telecommunications facilities, roads and drainage.

More than 80 percent of the developed land within these Phases has been subleased to various local and global companies. Phase Three, Four and Five – which constitute of 383 hectares – have the potential to be developed to expand PTP's current Free Zone development.

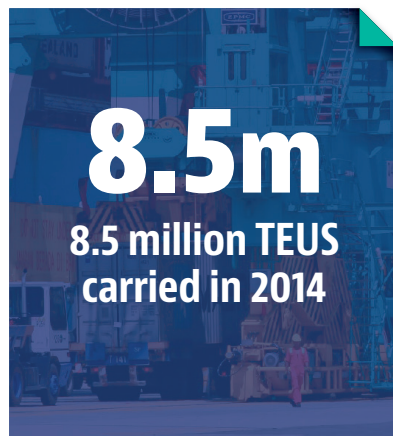
**Record TEU**

According to Chief Executive Officer (CEO), Glen Hilton, PTP hit a record eight million TEU in 2014, surpassing 8.5 million. "Passing this latest milestone further underlines our position as the leading container terminal in Malaysia," he said.

"We certainly could not have done this without the commitment and the dedication of our staff to provide fast and efficient service over the years. We are also thankful to the government and local authorities, customers and all of our stakeholders for their continuous support," Hilton said.

"The completion of our berth 13 and 14 in the second quarter of 2015, complete with new advanced equipment, has increased PTP's capacity to 12.5 million TEU a year. We are expecting the container market to grow primarily on the back of global shipping access hence utilising our port capacity.

"Hitting the nine million TEU mark is our target for 2015 and it will certainly create another great milestone for PTP," he added.



PTP has a team of dedicated staff who provide a fast and efficient service to cargo companies





PTP is targeting nine million TEU by the end of 2015

**Best Port award**

PTP has won numerous accolades and recognitions since the turn of the century, such as the first Malaysian port to be awarded the ISO 9001, ISO 14001 and OHSAS 1800; Frost & Sullivan’s 2012 Asia-Pacific Green Terminal Operator of The Year; APMT Review Excellence award; and Technology Business Review Asean Award for Excellence in Logistics.

In conjunction with the recent 2015 World Maritime Day, PTP was named winner of Malaysia’s 2014 Best Port award in recognition of its continuous positive improvement in productivity and container operations, and better optimisation of resources in achieving operational excellence.

“We are proud that PTP has been given this prestigious award. We will continue to improve the service level and further pursue our vision to be the preferred port of choice in the region,” Chairman of PTP and Group Managing Director of MMC, Datuk Seri Che Khalib

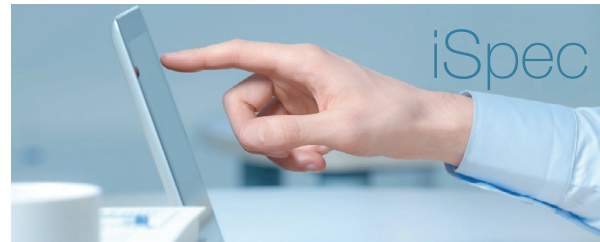
**“ We will continue to improve the service level and further pursue our vision to be the preferred port of choice in the region ”**

Mohamad Noh, said in a statement.

“With various concerted efforts and a series of operational and technical initiatives initiated by PTP, we are confident that our strong performance will continue to remain as such,” he added.

PTP continue to exceed customer expectations, with a results-driven Company culture and positive attitude towards innovation, making continuous improvements to products and services. By working together as a team and adhering to strict health, safety and environment practices, the Company demonstrates integrity in all of its operations.

“We are confident that the strong organic growth of PTP’s existing customers, as well as volume from new customers, will eventually increase our container volume over the next three to five years, thus enabling the port to continue as the catalyst for economic and social benefits to Johor State and the Iskandar Malaysia region,” the CEO concluded. ■



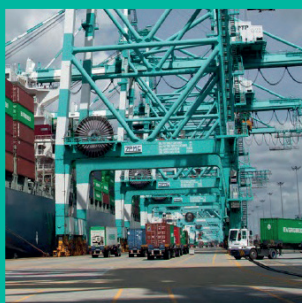
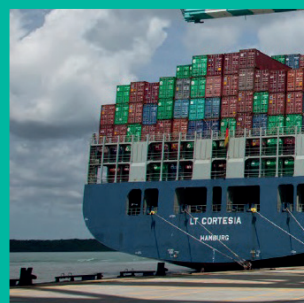
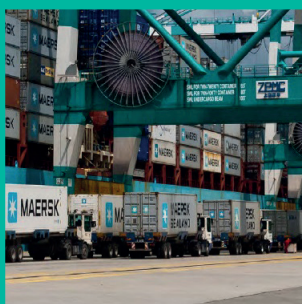
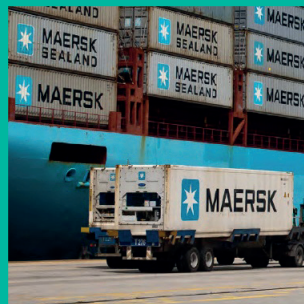
TECHNOLOGY    PROCUREMENT    PROJECT MANAGEMENT

Automate your **specifications, e-Tendering and project management** online as one seamless process, thereby reducing costs and improving efficiency.

iSpec was specifically designed for the transportation and ports industries to integrate the **CAPEX sourcing** process which involves multiple stakeholders such as Engineering, Finance, Procurement and Legal departments.

For a **free trial** or more information visit us at [www.remy-is.com](http://www.remy-is.com) or email [info@remy-is.com](mailto:info@remy-is.com)

iSpec



PELABUHAN TANJUNG PELEPAS SDN BHD  
Block A, Wisma PTP  
Jalan Pelabuhan Tanjung Pelepas  
TST 507, 81560 Gelang Patah  
Johor  
Malaysia  
T: +607 504 2222 | F: +607 504 2288  
E: [ptp@ptp.com.my](mailto:ptp@ptp.com.my)  
[www.ptp.com.my](http://www.ptp.com.my)